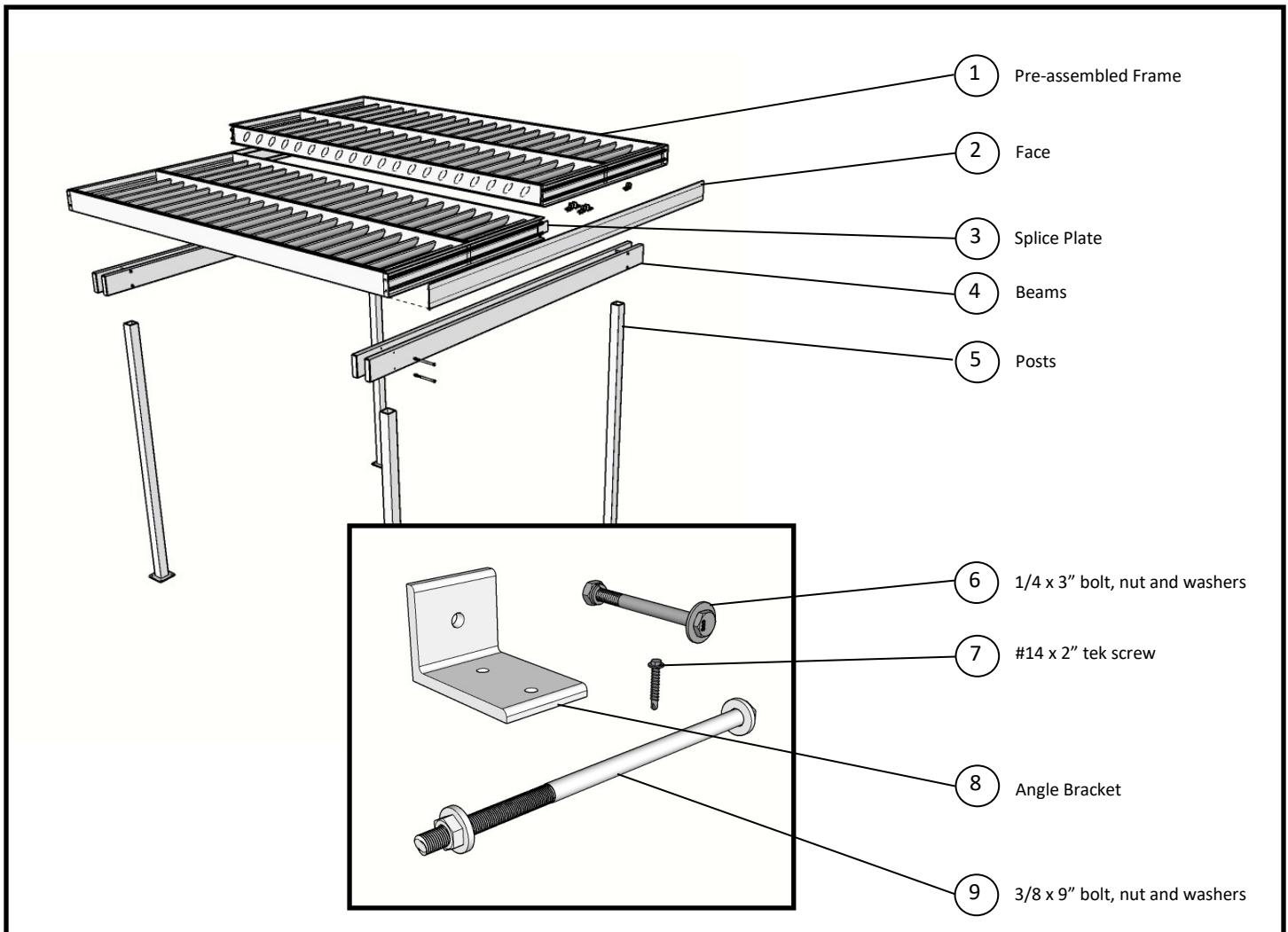




USCANY

Installation Instructions For the Tuscany System, Post and Beam style



These instructions are written with the assumption that the footers are already in place and the anchors set to conform with the bolt patterns in the base plates on the posts. This should be coordinated with the GC early in the project timeline to ensure this. Also, it is common practice to set the footer below the finish surface to allow a quik-crete/grout mixture to fill over the anchors and base plate for a finished look.

The illustrations show 6" airfoil infill panels. There are many optional infill panels available. The system your installing may have different infill panels. This should not change the install procedures shown here.

1. Upon delivery, inspect the product for any damages that may have occurred during transit. Open the field kit crate, review the drawing package and check the field kit quantities and the packing list.
2. Refer to project specific drawing package for intended method of installation. - Begin installation by setting the Posts (#5) onto the anchors at top of the footers. Make sure you have nuts below and above the base plate to allow adjustment. (see fig 2)
3. Once all post are in place, make sure they are plumb and the tops are level with each other. This is done by adjusting the nuts on the footer anchor bolts. If you cannot get the top of the posts level completely, Cut the tops of the highest posts to a level line with the lowest posts. (see fig 3)

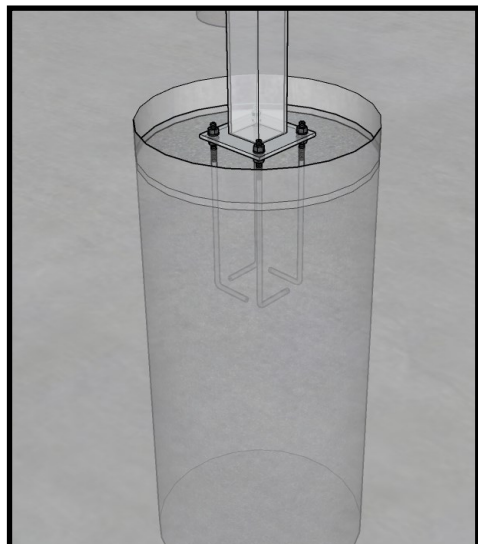


Fig 1

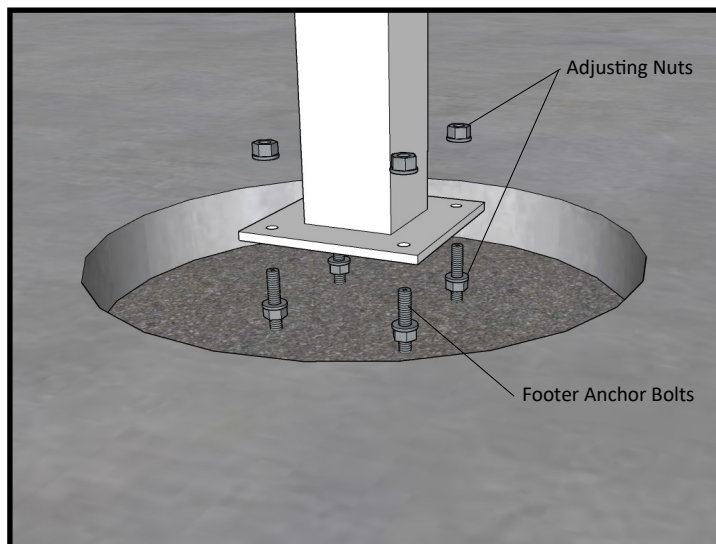


Fig 2

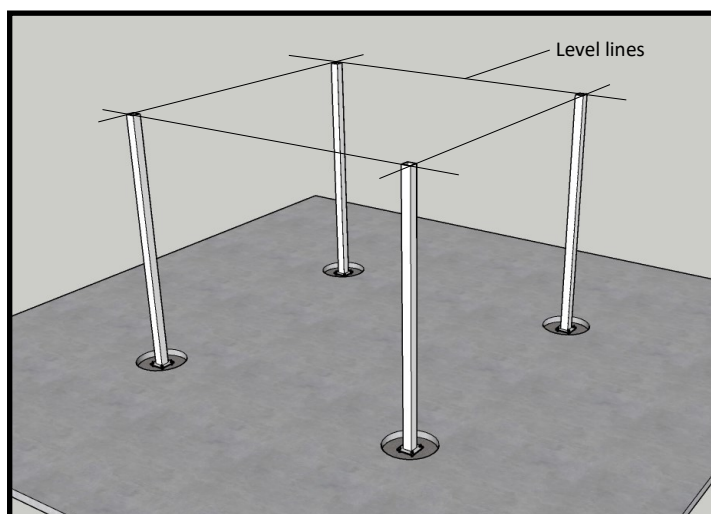


Fig 3

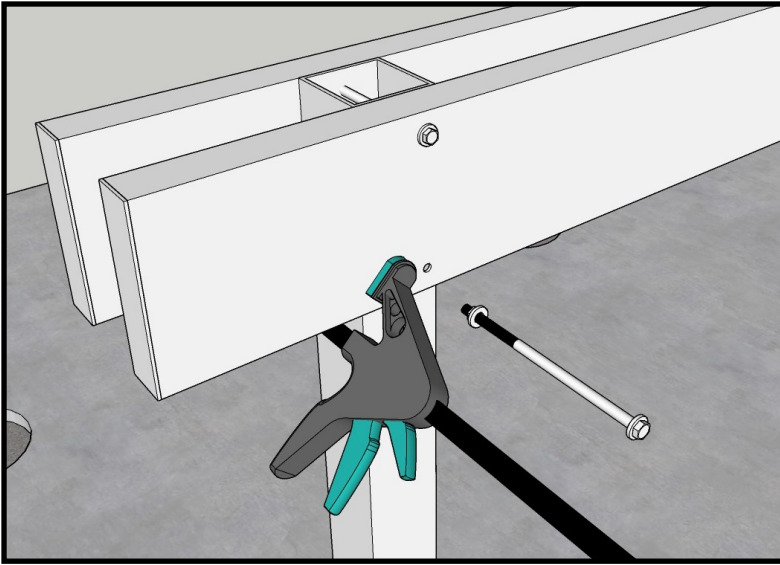


Fig 4

6. Set the Frames (#1) in place as shown in the drawing package. Make sure the Splice Plates (#3) are in position. To snap the frames together, use the same soft padded clamp. Make sure the frames are aligned by positioning the Splice Plates across the seams and secured with a dab of caulk. (see fig 6)

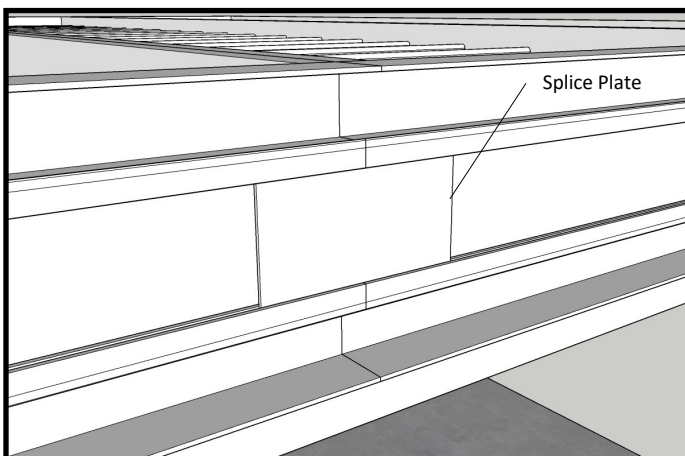


Fig 6

4. Using a soft padded clamp, clamp the Beams (#4) in place based on dimensions given in the drawings. Mark hole locations, 1" from top and bottom of beam and centered on the post. Drill a 7/16" diameter hole through the beam and one side of the post. Do this on both sides through each beam.
5. Using the 3/8 x 9" bolts (#9) provided, run a washer onto the bolt and then run the bolt through the beam, post and other beam. Add another washer, lock washer and nut on the other end. Tighten until secure. Do not over tighten to the point of deforming the beams.

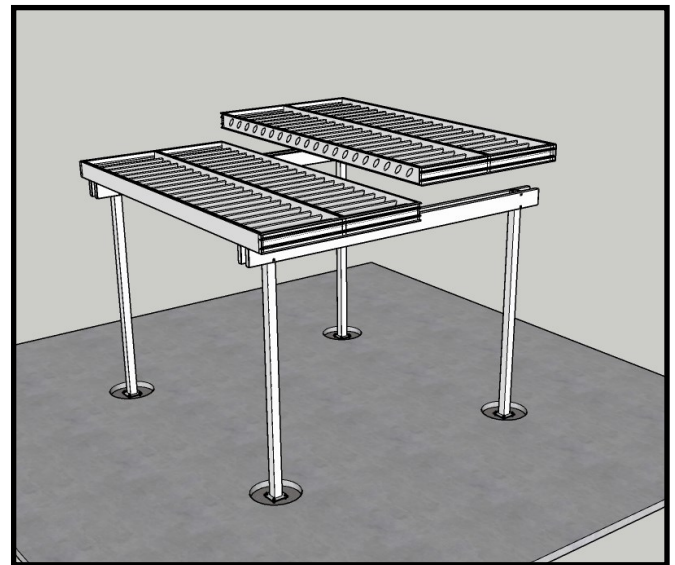


Fig 5

7. Once you have all of the frames together and positioned where they go, begin attaching the Angle Brackets (#8).

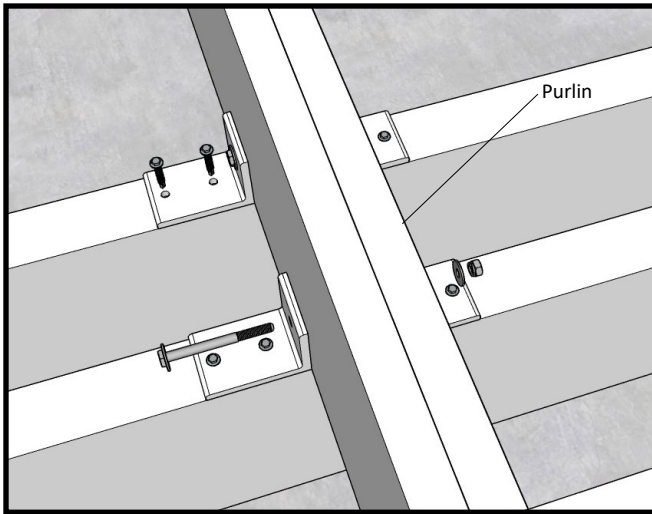


Fig 7

8. Position the Angle Bracket (#8) on one side of the purlin and flush with the sides of the beam. Drive in the two #14 x 2" tek screws (#7) into the beam (#4).
9. Repeat this on the other side of the purlin.
10. Drill a 5/16" hole through the Angle Bracket and one side of the purlin. Do this on both sides.
11. Using the 1/4 x 3" bolt (#6), run a washer onto it, insert the bolt and washer through the hole you just made, add another washer, a lock washer and a nut. Tighten until secure.
12. Repeat this step where indicated in the drawings. (see fig 7 & 8)

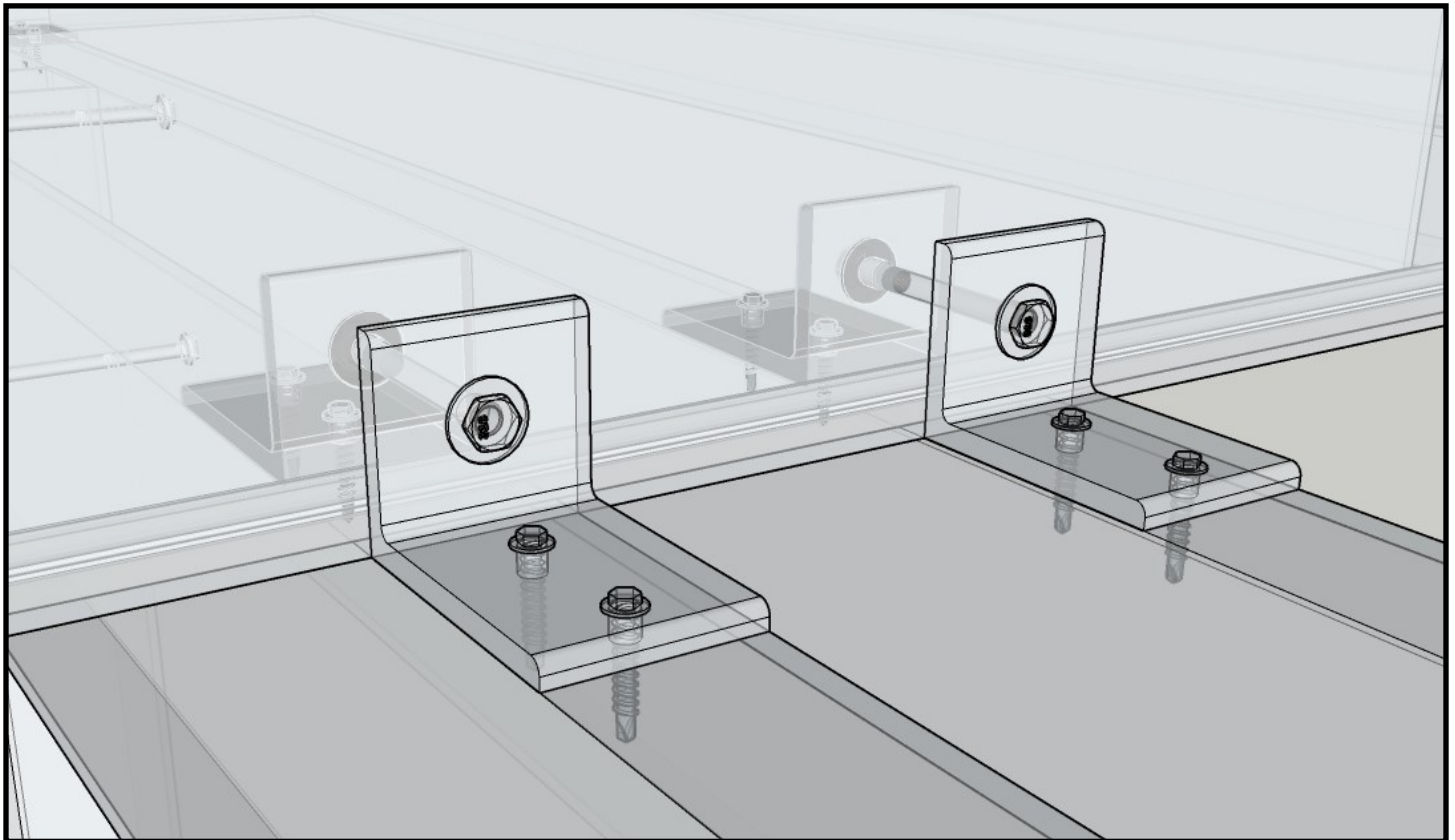


Fig 8

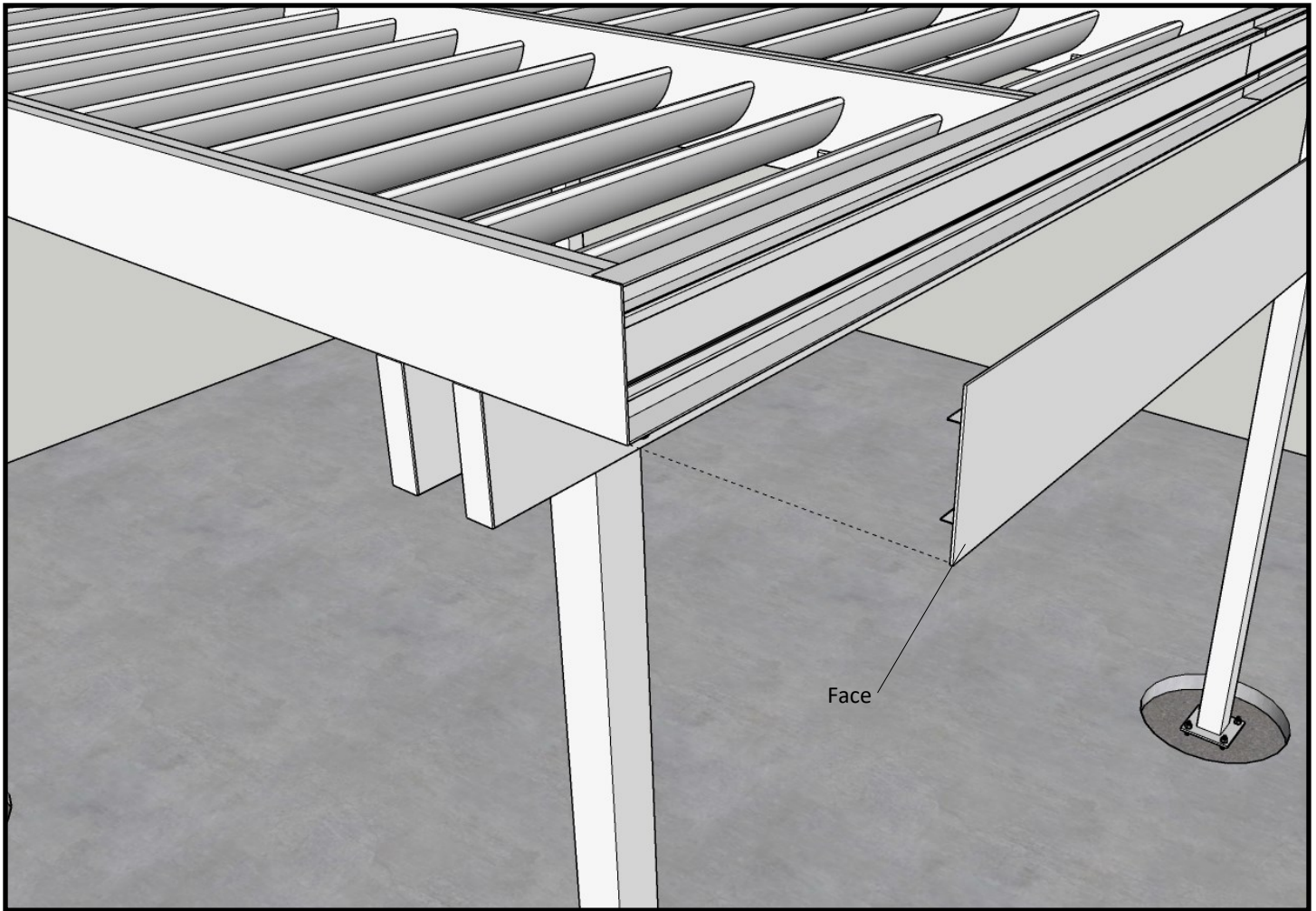


Fig 9

13. Once all of the Angle Brackets are secured, it is time to install the Face (#5). The face simply snaps on. You may need to use a rubber mallet in some spots. Make sure you protect the paint finish. Cut to length if necessary. When cutting powder coated extrusions, protect the paint finish by using masking tape and then sealing the raw cut.

14. Touch up all exposed hardware screws as needed with supplied touch up paint.

15. Wipe down all surfaces removing dirt, smudges and hand prints.