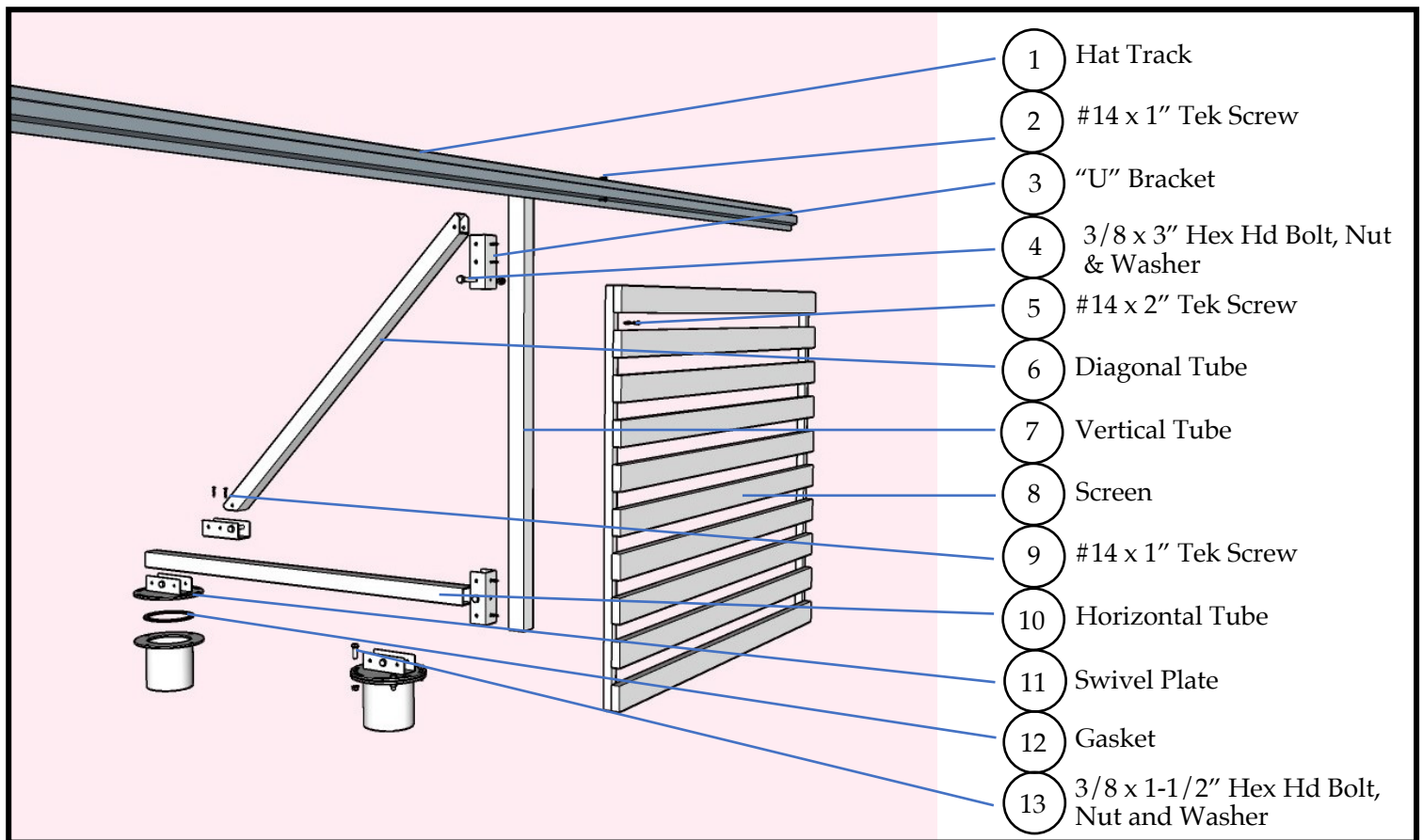


Installation Instructions for the Hollywood System Roof Screen – Surface Mounted Style



Upon delivery, inspect product for any damage that may have occurred during transit. If anything is damaged, inform Awnex immediately with photos.

These installation instructions show a typical Hollywood Roof Screen, Surface Mounted style project. Your particular project will have differences in size, shape and louver type. This should not change the general approach to installation as outlined here. Custom features will have instructions outlined in the production drawings provided.

1. Open the field kit crate, review the drawing package and check the field kit quantities per the packing list.
2. With this style of Roof Screen, the Stand-off (see exploded view on page 1) should have been shipped early and installed by the GC in accordance to the layout provided and ensure there is adequate blocking in place to secure. The Stand-offs should be shimmed if necessary to keep the top flange relatively level. Their roofing contractor should have sealed the penetrations before you arrive on site (Fig 2). It is recommended that this be confirmed before you travel to the site.
3. Once arriving onsite, check the Stand-off layout for accuracy to the drawings that were provided (Fig 1).

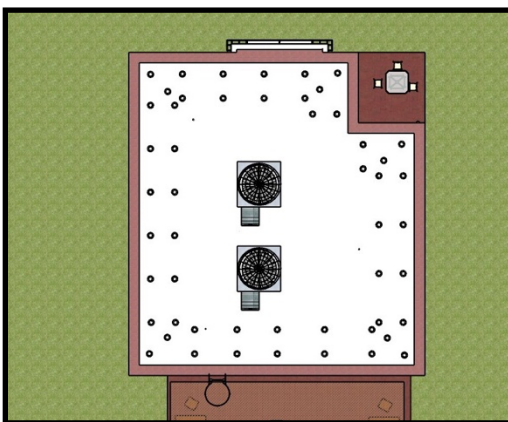


Fig 1

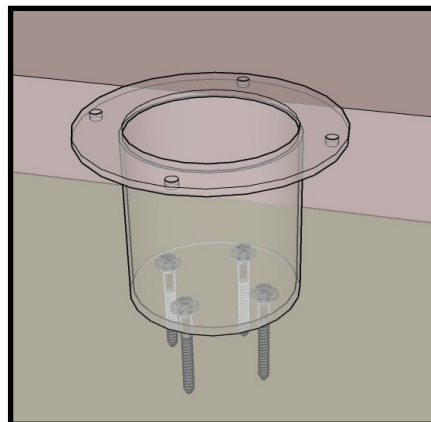


Fig 2

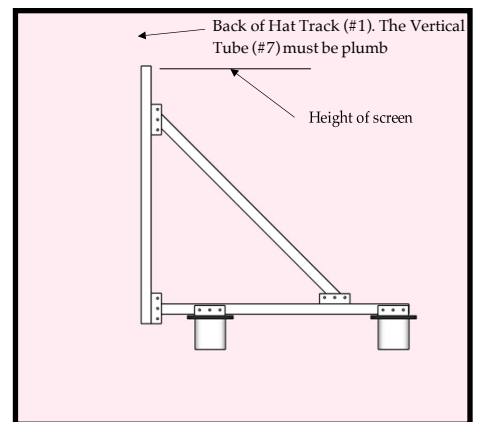


Fig 3

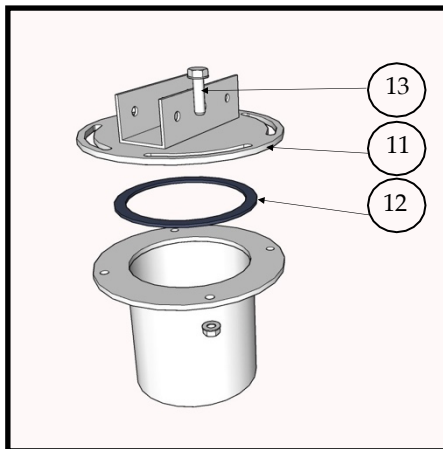


Fig 4

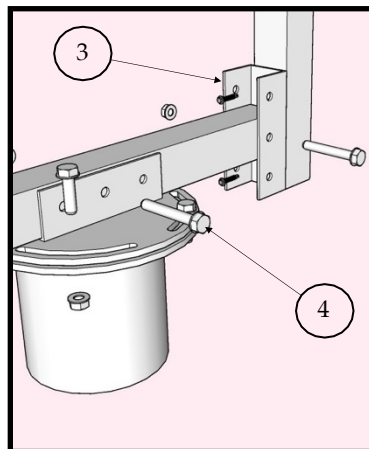


Fig 5

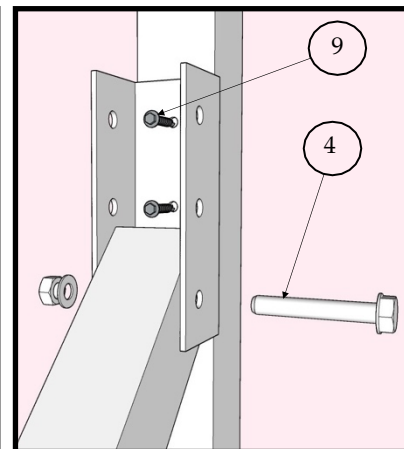


Fig 6

4. Before assembling the frames, install the Swivel Plates (#11) and the Gasket (#12) using the 3/8" x 1-1/2" Hex Hd Bolt, Nut and Washers (#13) provided. Do not tighten completely until you have the Horizontal Tube (#10) nested into the "U" Brackets to ensure proper alignment.

- When assembling the frame that supports the screens, make sure the vertical tubes (#7) are at the proper height and distance from the outside screen finish surface. The "U" Brackets (#3) give you the flexibility to move the tubes to the positions needed. Use the #14 x 1" Tek screws (#9) to attach the "U" Brackets to the tubing and the 3/8 x 3 Hex Hd Bolt, Nut and Washers (#4) to attach the Tubes to the "U" Brackets.

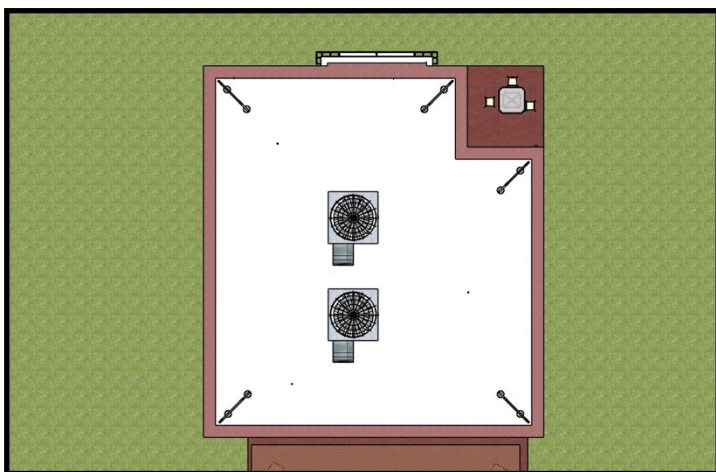


Fig 7

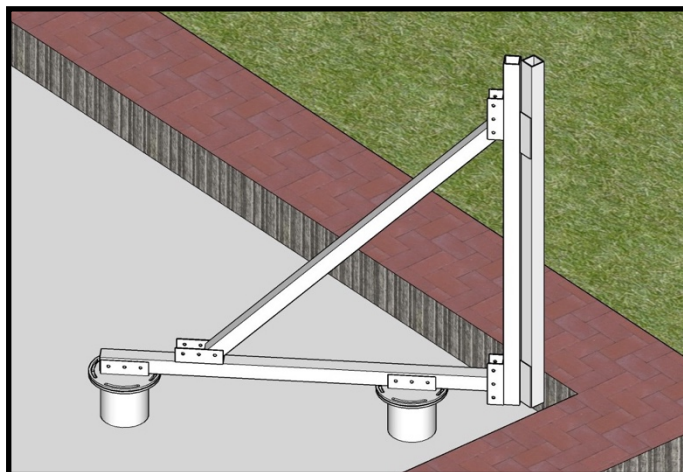


Fig 8

- Begin assembling the corner frames first paying attention to the finish outside surface of the screen then subtracting the thickness of the Screen (#8) and Hat Track (#1) (Fig 9). Refer to the drawings provided.

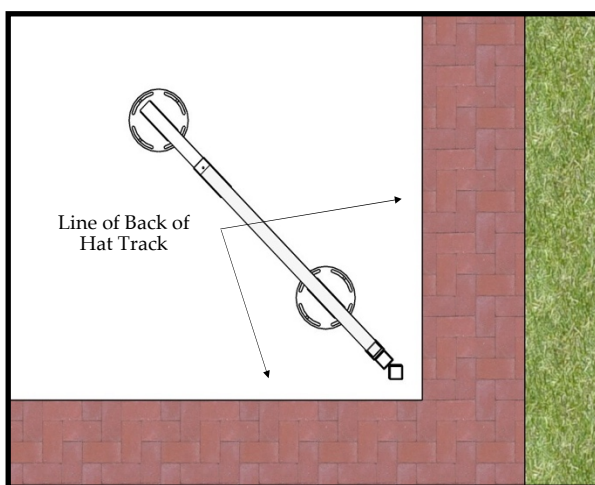


Fig 9

- Check that the Vertical Tubes (#7) are at the proper height and plumb.
- Once the corner frames are in place and checked, run a string line from corner to corner down the side you want to assemble next (Fig 9).

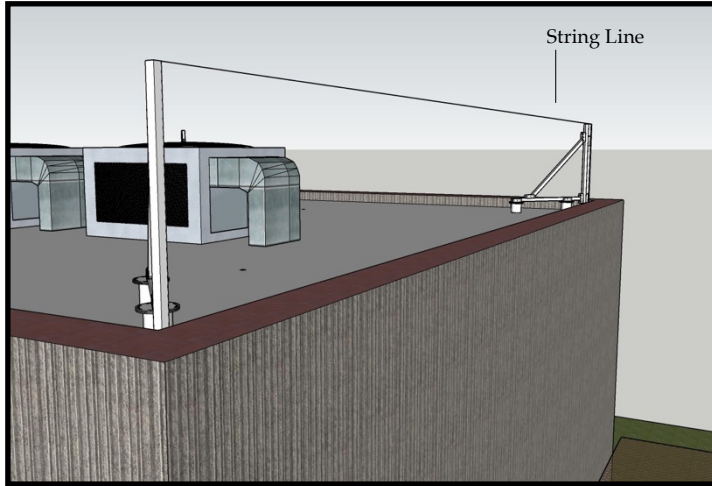


Fig 10

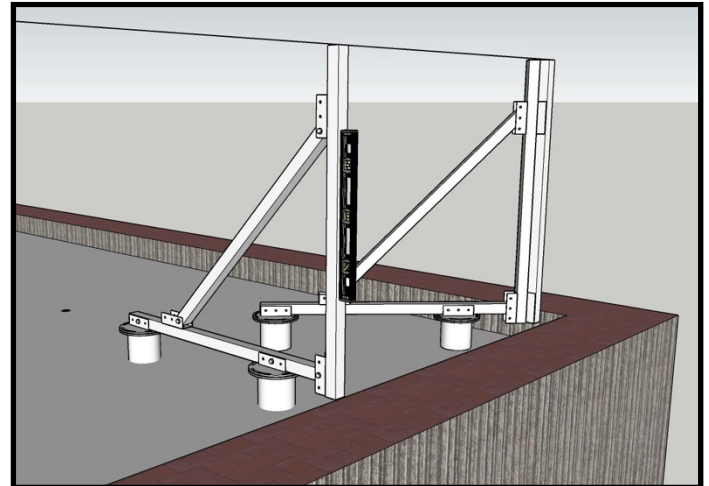


Fig 11

9. Once you have the string line in place, assemble the rest of the frames between the two corner frames. Make sure the tops of the Vertical Tubes are level with the string and that they are plumb. Repeat this process on all sides (Fig 12).

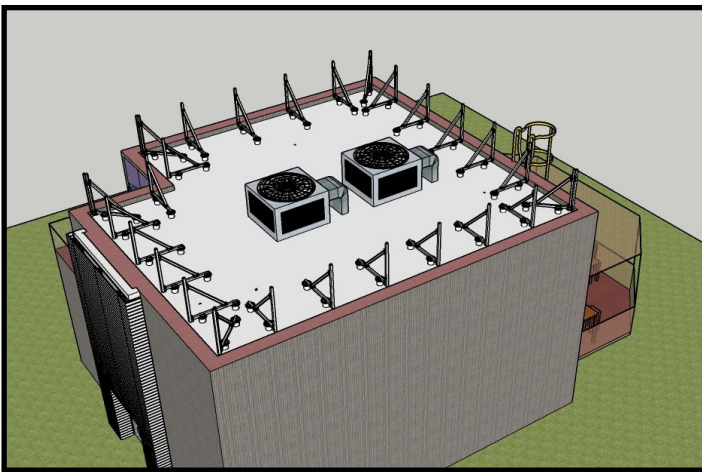


Fig 12

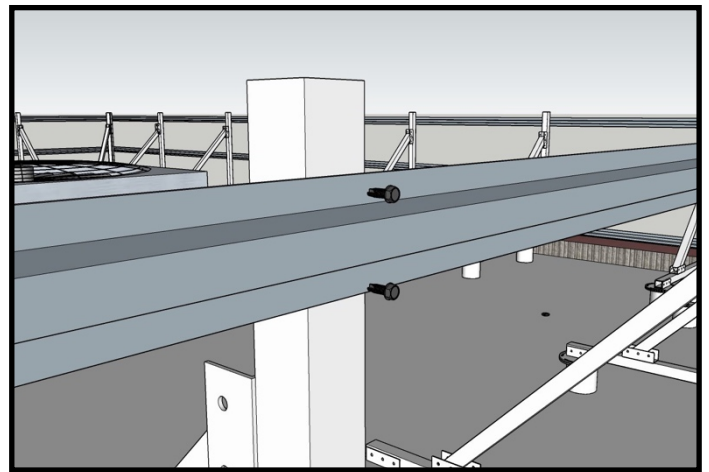


Fig 13

10. Once all the frames are assembled and checked for position and level, check the drawings for elevation and spacing of the Hat Track (#1).
11. Secure the Hat Track (#1) to the Vertical Tube (#7) using the #14 x 1" Tek screws (#2) provided (Fig 12).
12. Complete installing all of the Hat Tracks as shown in Fig 14.

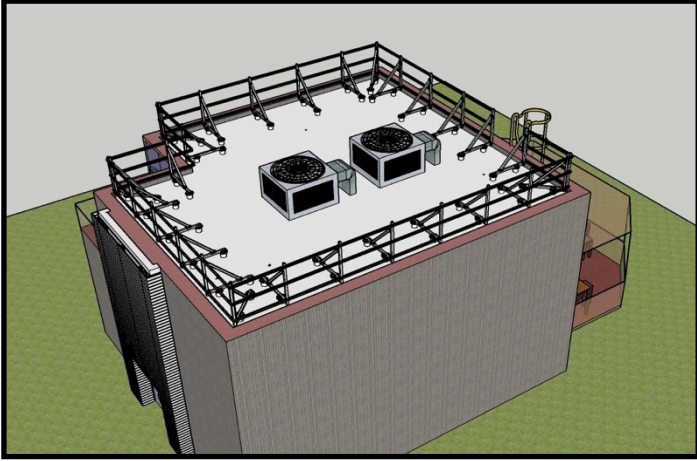


Fig 14

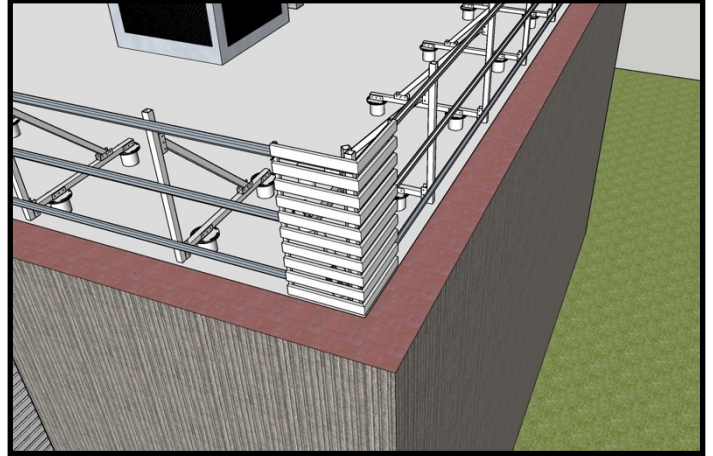


Fig 15

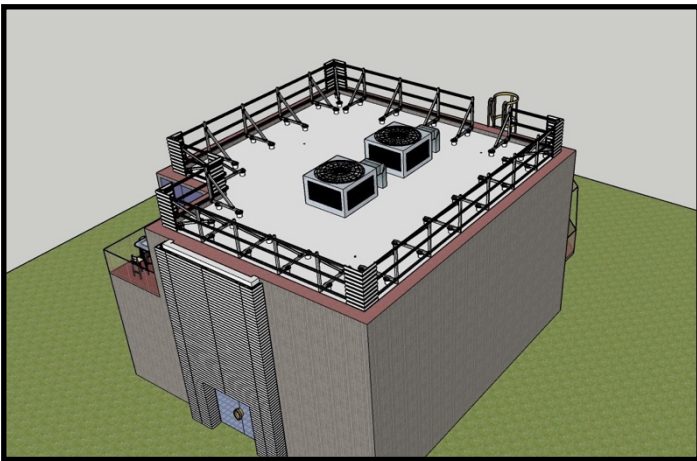


Fig 16

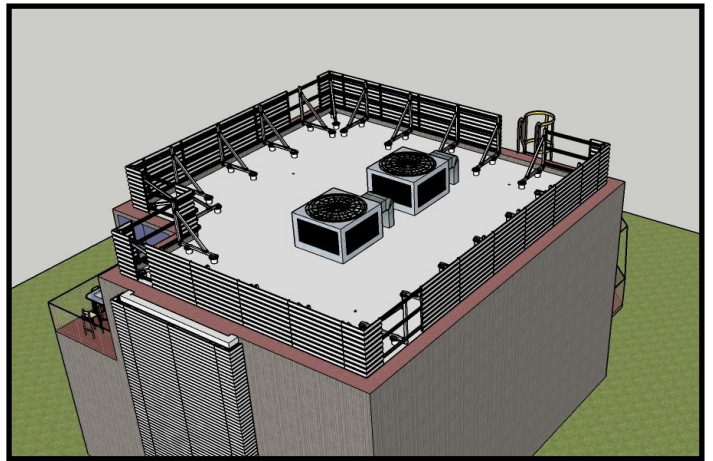


Fig 17

13. The Screens will be either a standard size or a custom size. Any custom frame will be labeled to show where they go on the project. When installing the screens, start with the Corner Screens first.
14. Use the #14 x 2" Tek screws (#5) provided through the screen frame and into the Hat Track as illustrated in the drawing package provided.
15. Complete the installation of all the Corner Screens (Fig 16).
16. For each straight run of screens, install as many Standard Screens (#8) as will fit. This will leave a gap that will be filled by a cut-down screen.
17. Repeat this step for every straight run on the project. This will leave only the cut-down screens remaining (See sheet 7 for instructions on how to cut down a louvered screen).

18. As you cut down the remaining screens, install the screens until the job is complete.

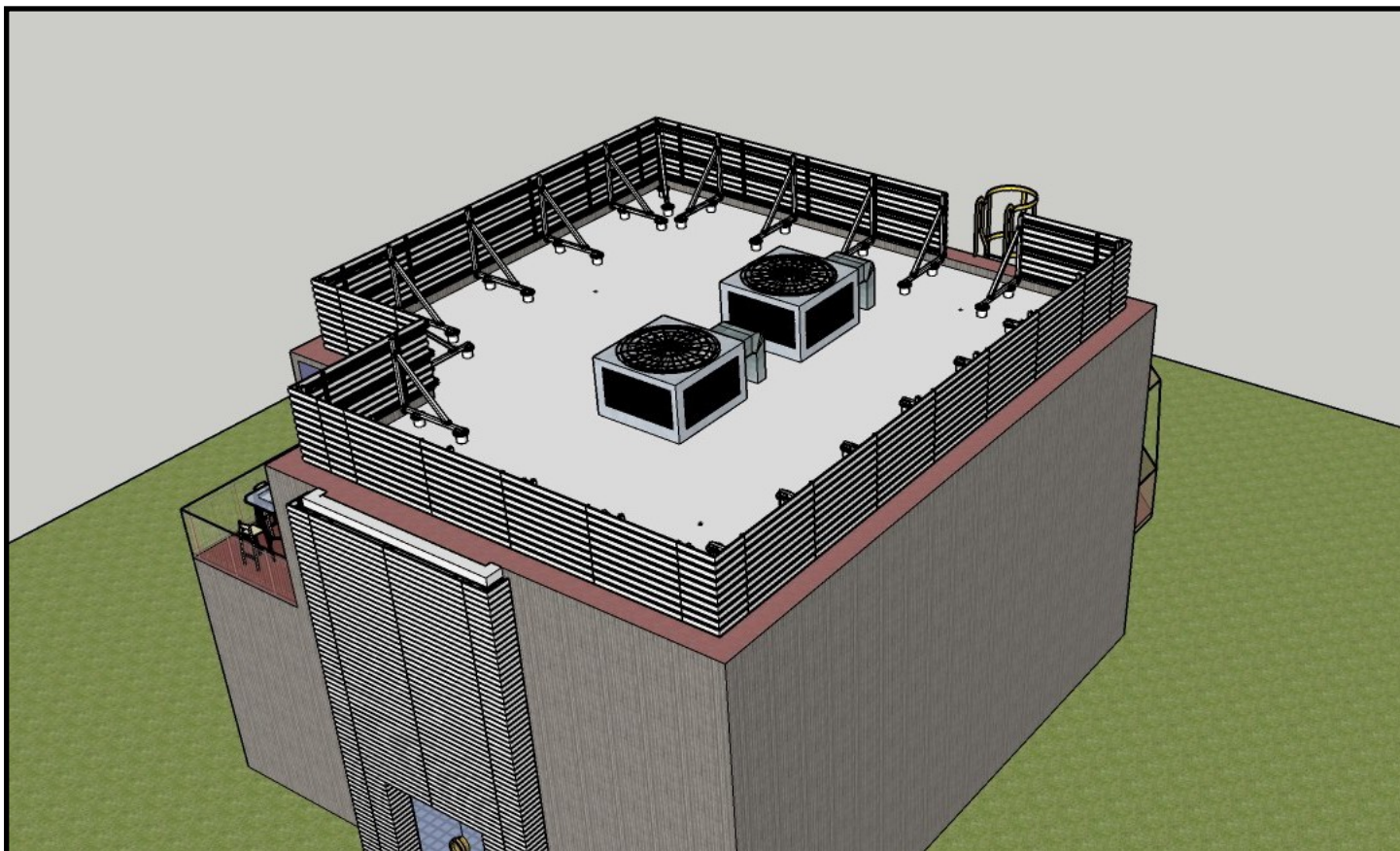


Fig 18

19. Touch up all exposed hardware screws and cut edges as needed with supplied touch up paint.

20. Wipe down all surfaces removing dirt, smudges and hand prints.

Cutting Down a Louvered Screen

1. When cutting down a screen, use a skill saw with a nonferrous blade. Protect the paint finish with painters tape on the surfaces that contact the saw.
2. The process for cutting down a screen is shown in Fig 1 – 6 (see below).

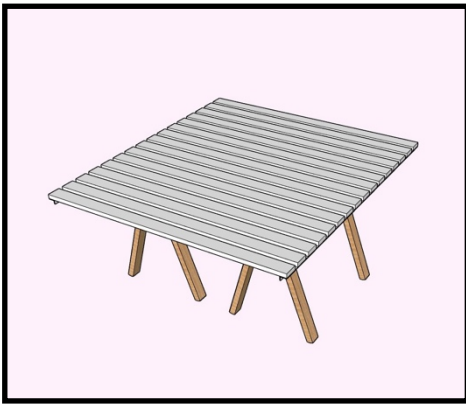


Fig 1

Place the screen on a flat work surface ensuring that you protect the paint finish.

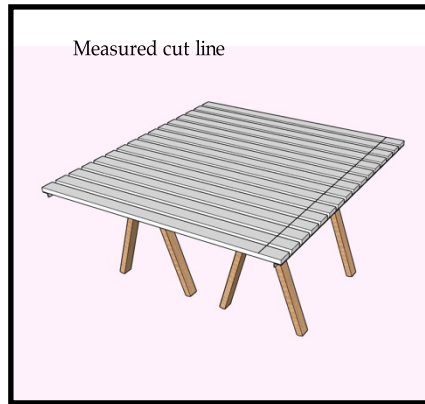


Fig 2

Measure and mark the cut-line.

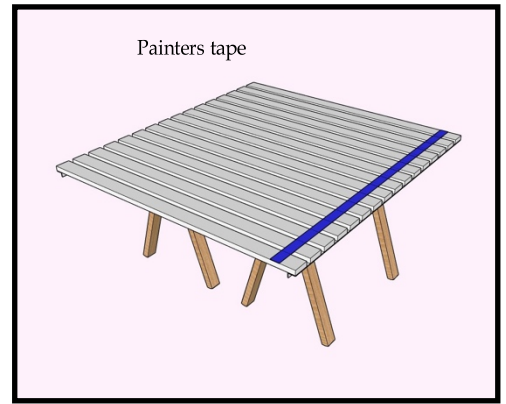


Fig 3

Protect the paint finish by using painters tape where the saw will contact the paint.

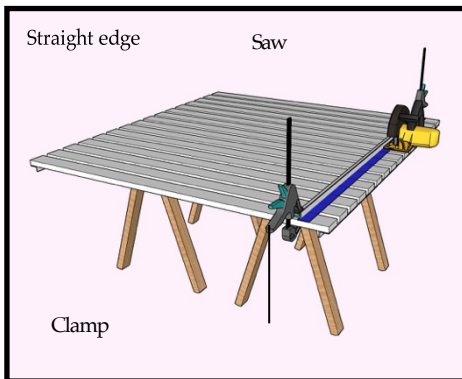


Fig 4

Clamp a straight edge to track the saw to the cut line and cut the screen.

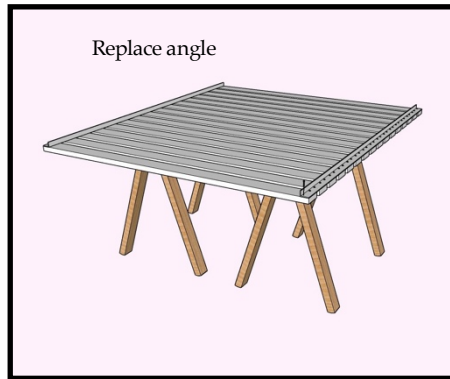


Fig 5

Remove the angle from the cut piece and install to the new location to the back of the screen using the same screws.



Fig 6

Repeat this process for each screen that needs it.