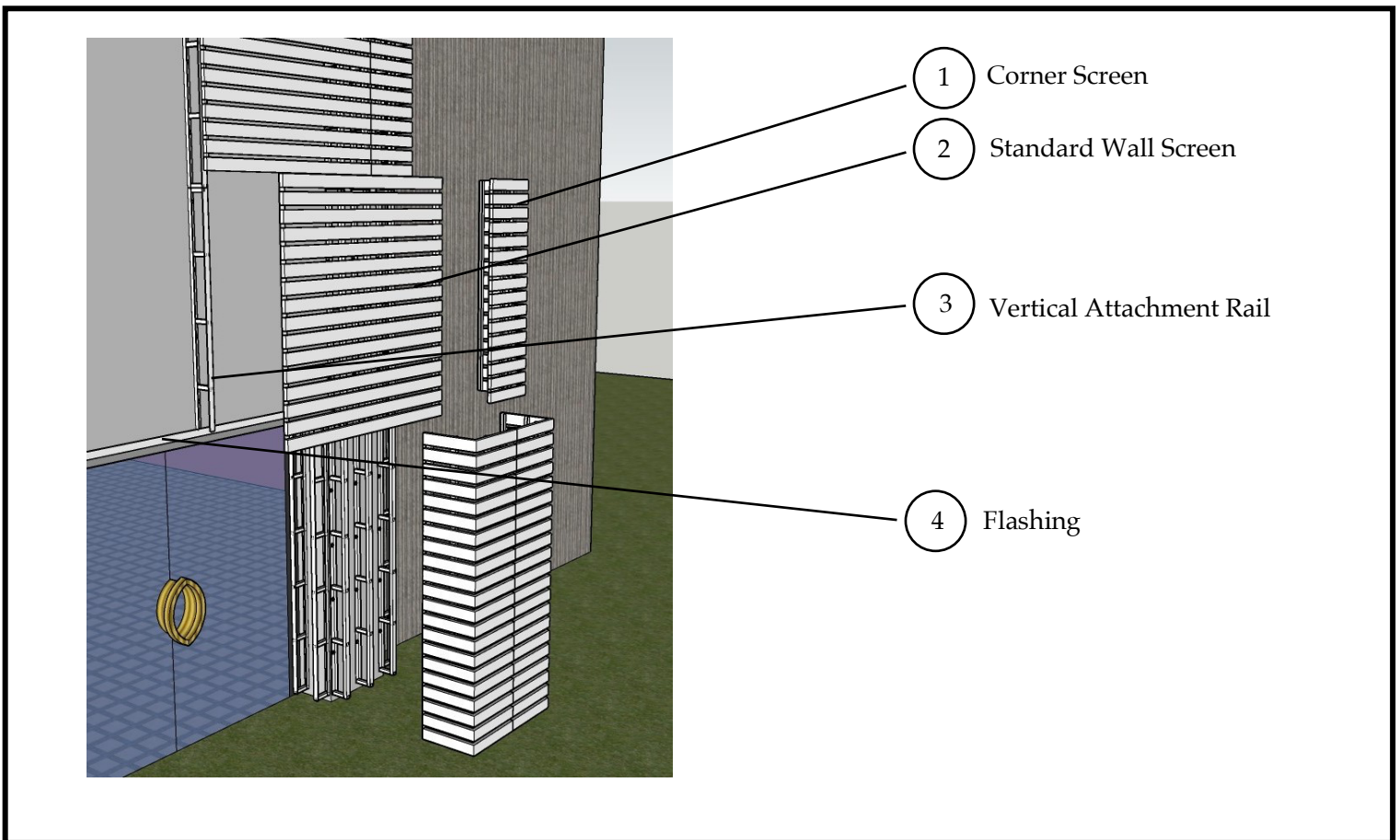


Installation Instructions for the Hollywood System Wall Screens



Upon delivery, inspect product for any damage that may have occurred during transit. If anything is damaged, inform Awnex immediately with photos.

Your particular project will have differences in size, shape and louver style. This should not change the general approach to installation as outlined here. Optional features, such as LED lights, will have instruction outlined in the production drawings provided.

1. Open the field kit crate, review the drawing package and check the field kit quantities per the packing list.
2. Refer to project specific drawing package for intended method of installation. – Begin installation by identifying and locating any flashing (#4) with the project and secure to the wall using supplied fasteners (Fig 1).
3. Next, using the measurements provided in the installation section of the drawings, mark the project specific location of the Vertical Attachment Rails (#3) on the wall.
4. Continue mounting all Vertical Attachment Rails using provided hardware in the field kit (Fig 2). Seal any wall penetrations with the provided caulk.

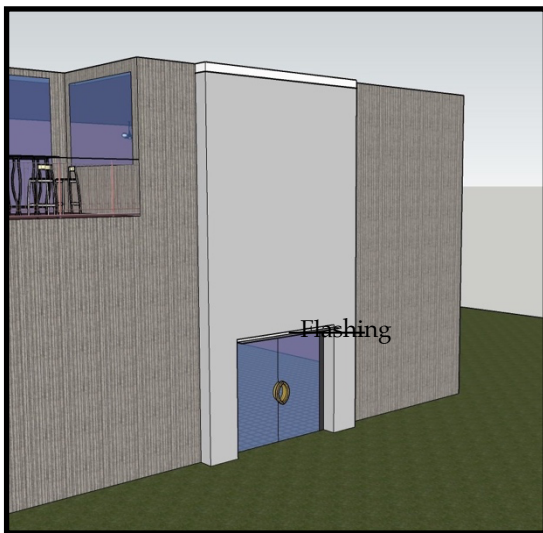


Fig 1

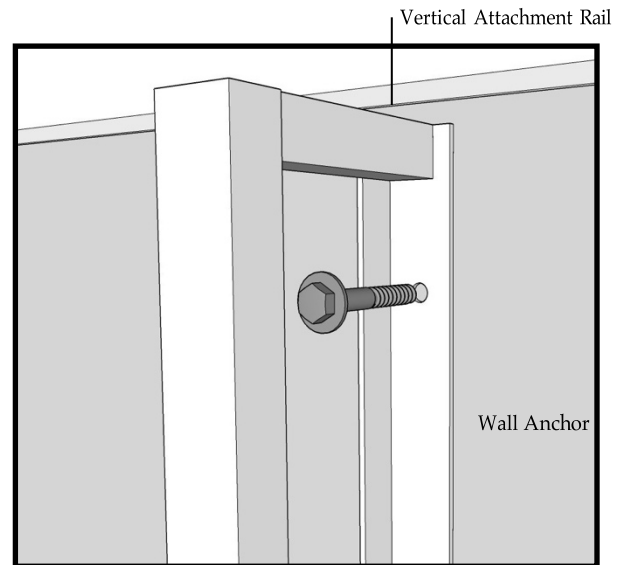


Fig 2

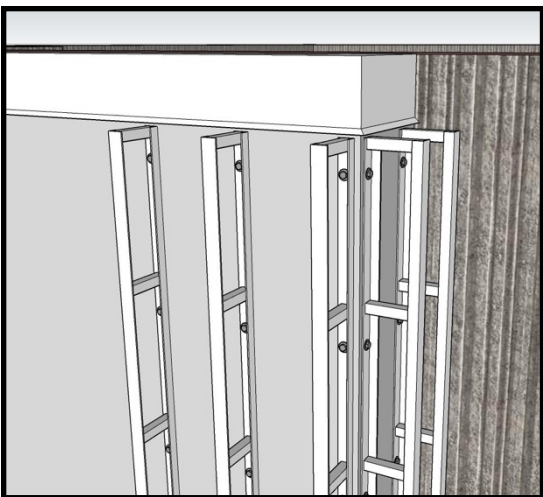


Fig 3

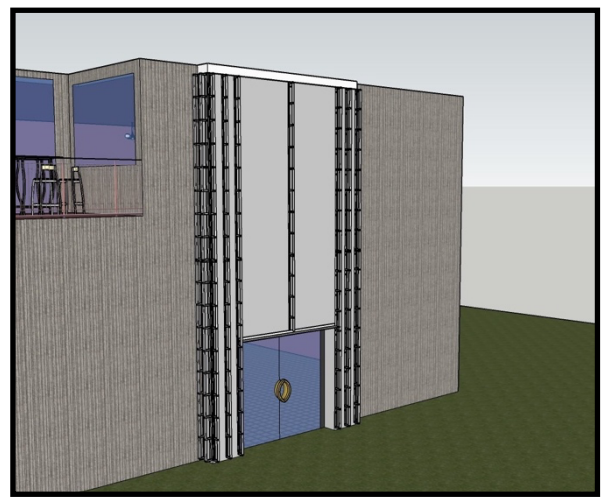


Fig 4

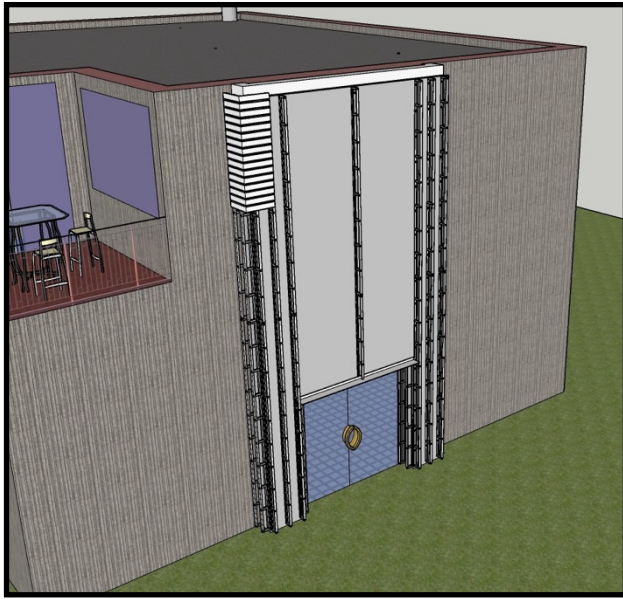


Fig 5

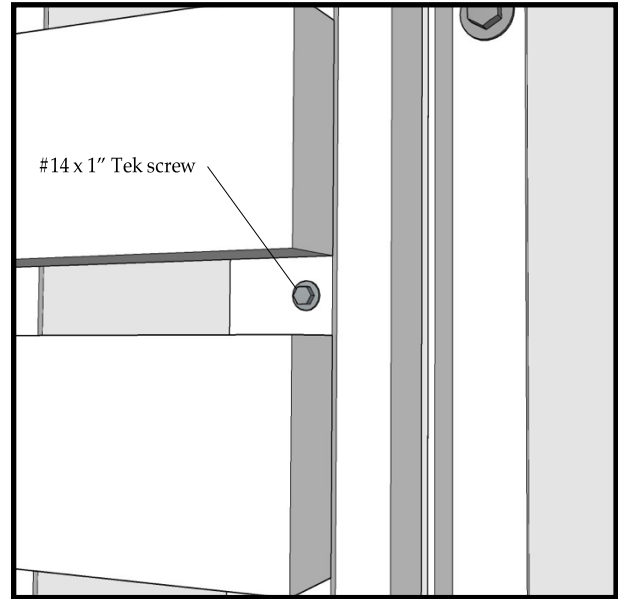


Fig 6

5. Starting from the top corner, attach the appropriate Corner Screen (#1) with the #14 x 1" Tek screws provided in the field kit (Fig 6) by securing the angle on the back of the screen to the Vertical Attachment Rail.
6. Continue installing all Corner Screens as show in Fig 7 & 8
7. Begin installing Standard Wall Screen (#2) from the top leaving one row of Standard Wall Screens left uninstalled (Fig 9). These screens will be cut-to-fit if necessary.

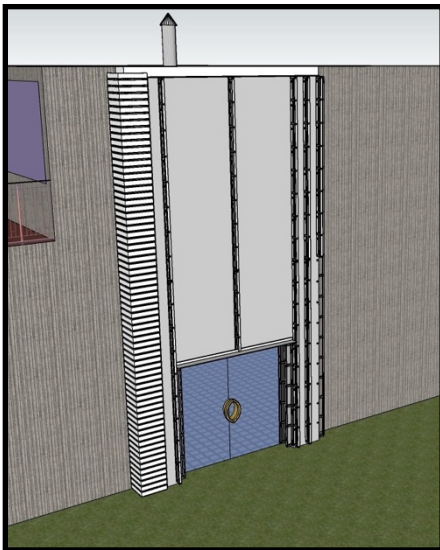


Fig 7

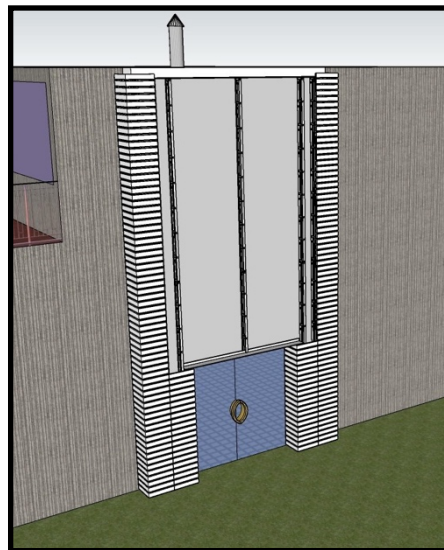


Fig 8

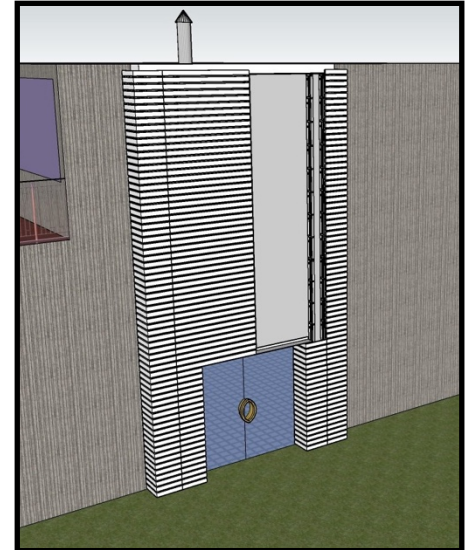
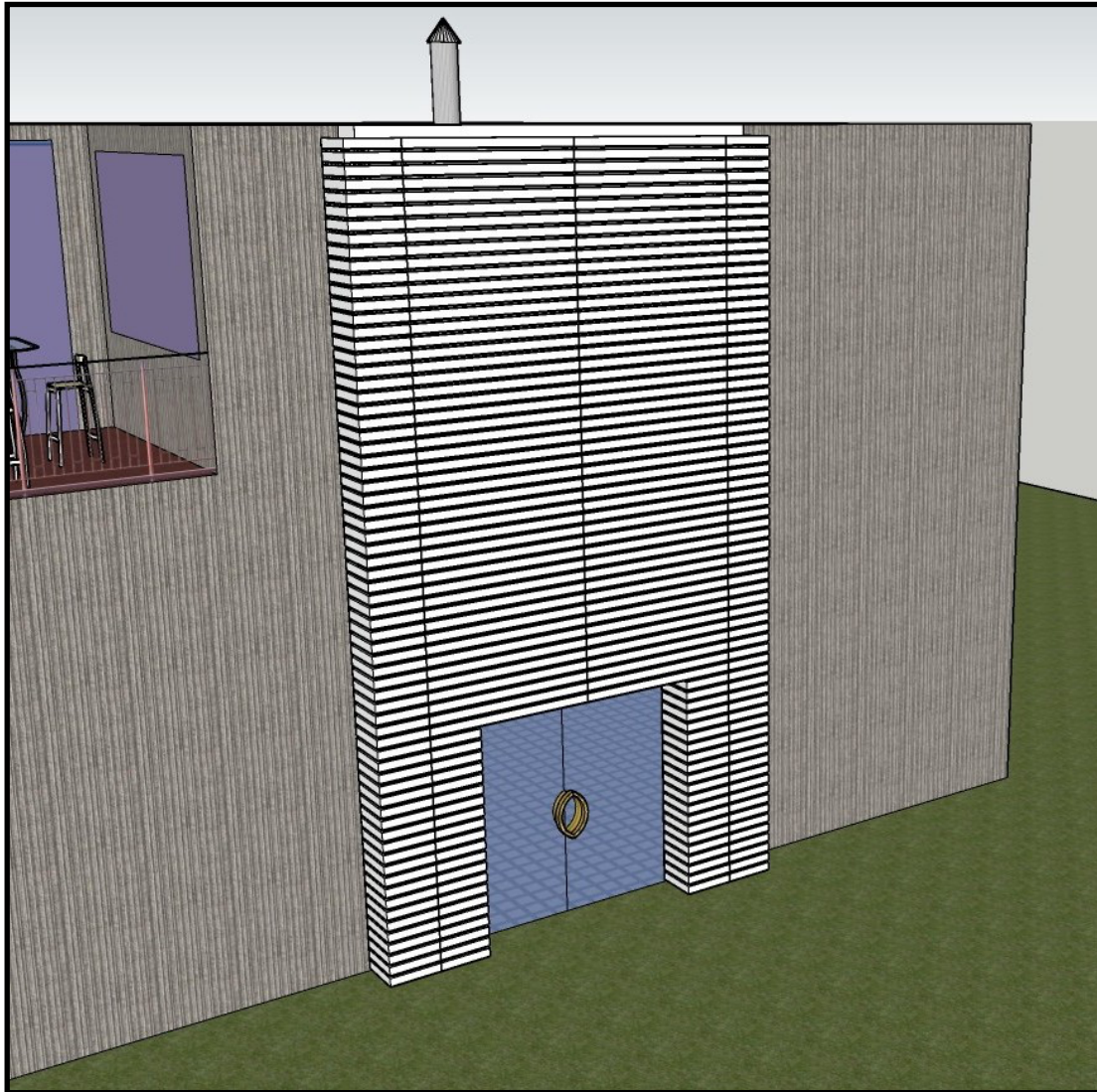


Fig 9

8. As you cut down the remaining screens, install the screens until the job is complete.



9. Touch up all exposed hardware screws and cut edges as needed with supplied touch up paint.

10. Wipe down all surfaces removing dirt, smudges and handprints.

Cutting Down a Louvered Screen

1. When cutting down a screen, use a skill saw with a nonferrous blade. Protect the paint finish with painters tape on the surfaces that contact the saw.
2. The process for cutting down a screen is shown in Fig 1 – 6 (see below).

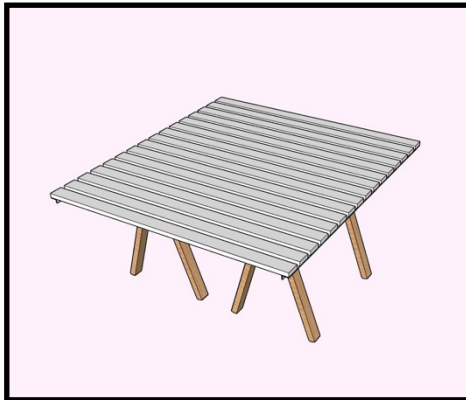


Fig 1

Place the screen on a flat work surface ensuring that you protect the paint finish.

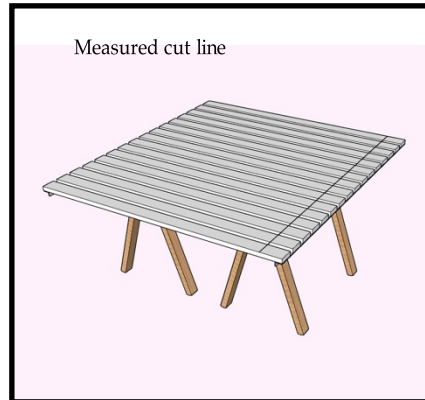


Fig 2

Measure and mark the cut-line.

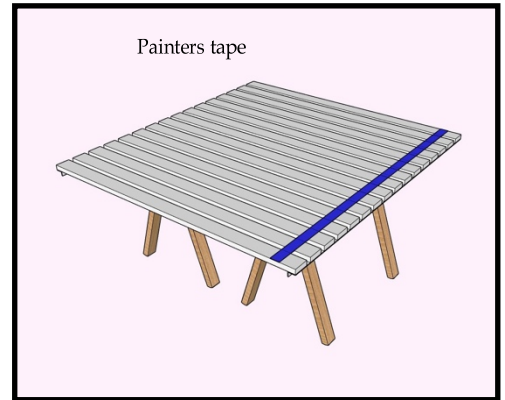


Fig 3

Protect the paint finish by using painters tape where the saw will contact the paint.

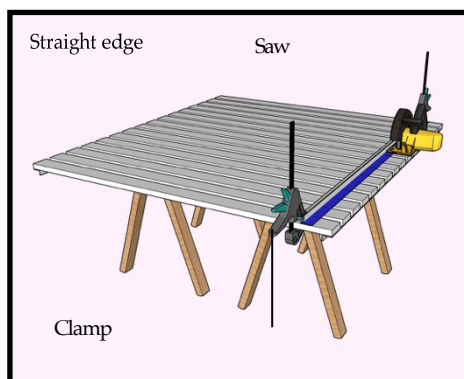


Fig 4

Clamp a straight edge to track the saw to the cut line and cut the screen.



Fig 5

Remove the angle from the cut piece and install to the new location to the back of the screen using the same screws.



Fig 6

Repeat this process for each screen that needs it.